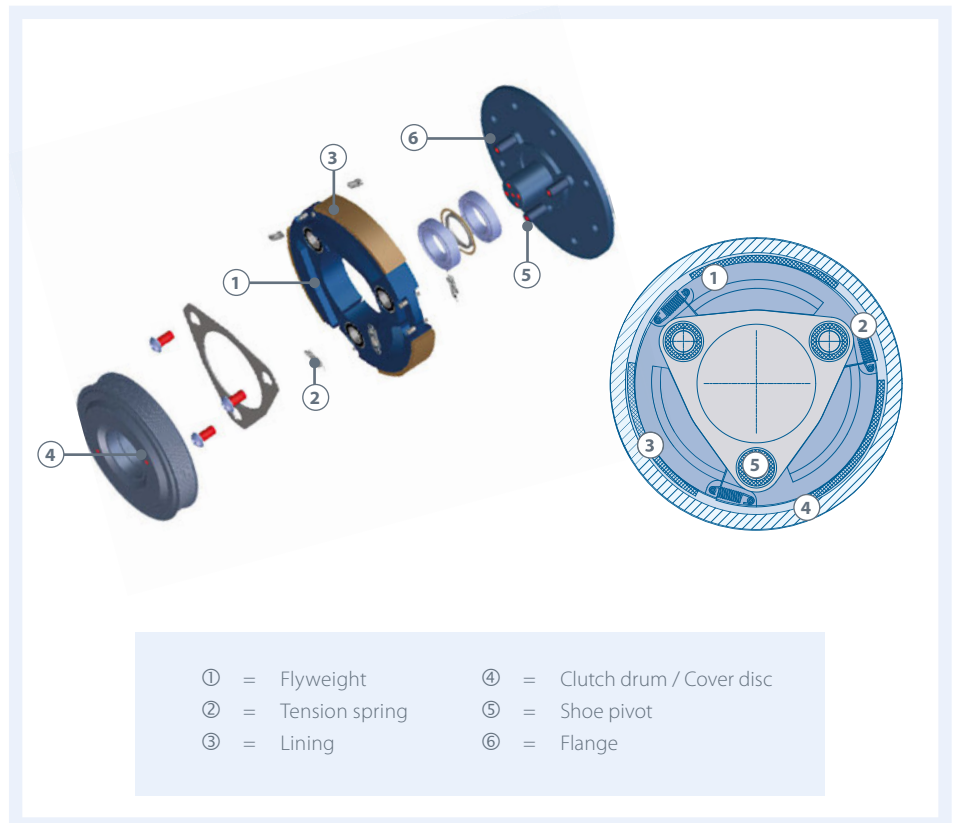
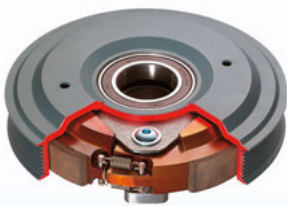


P-Type

Asymmetric pivot clutch

Construction and mode of operation



- Extremely narrow design
- Lowest noise level of SUCO clutches
- Performance factor between 1.75 and 1.25 (depending on direction of rotation)

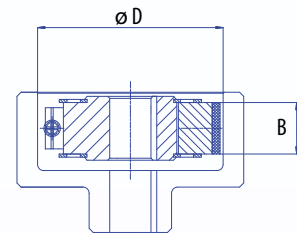
P-Type

Performance data and dimensions

Type Number	D [mm]	B [mm] ¹⁾	Standard rotational speed			
			low		high	
			Mat.nE 750 and nB 1500 [N/m]	recommended motor power [kW] ²⁾	Mat.nE 1500 and nB 3000 [N/m]	recommended motor power [kW] ²⁾
P11	187	30	175	13	460	60
P12	193	30	180	14	500	70

Other sizes are available on request.

- M = torque
nE = engagement speed
nB = operating speed
- ¹⁾ The transmitted power increases as the width B is increased.
²⁾ Motor power is calculated using a safety factor of 2.
Final selection of the clutch should be accomplished by SUCO!



- D = inside dia. of drum
B = flyweight width

Key to model codes

